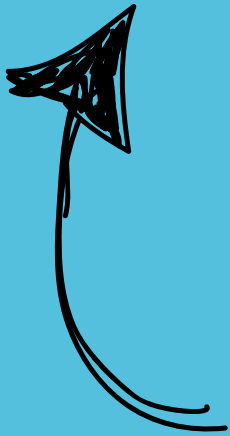


Clevertouch Guide

Menu

To ensure optimal usability, please connect your cloud account to both "Finder" and the "LYNX Whiteboard."



[How to mirror my device to the Clevertouch using a wire connection?](#)

[How to mirror my device to the Clevertouch wirelessly \(CleverShare\)?](#)

[What do the different arrows do on my home screen?](#)

[What do the coloured buttons on my remote do?](#)

[How to access my cloud storage from my "finder" icon?](#)

[How to connect my LYNX Account to my Cloud account?](#)

[What does my floating pencil tool do?](#)

[What do the icons do at the bottom of my lynx whiteboard do?](#)

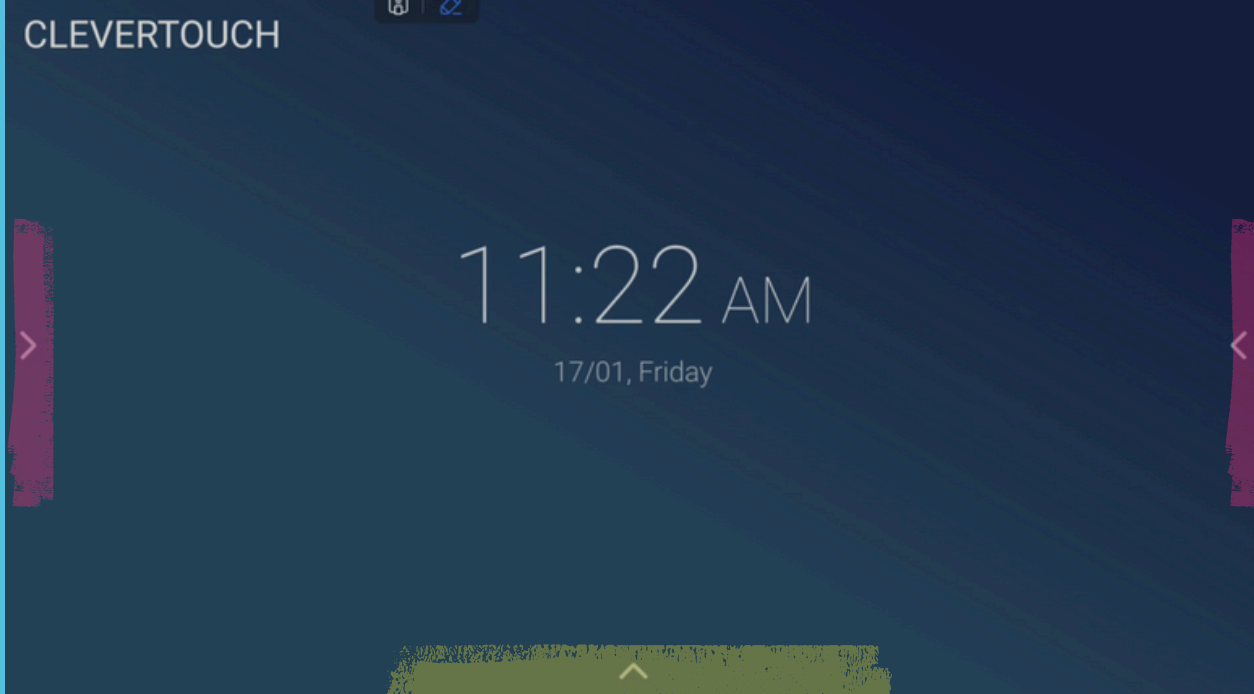
[What does the "+" icon in the LYNX Whiteboard do?](#)

[How do I save my LYNX Presentation?](#)

[How can I add interactive features to objects in the LYNX Whiteboard?](#)

[LYNX Whiteboard overview video](#)

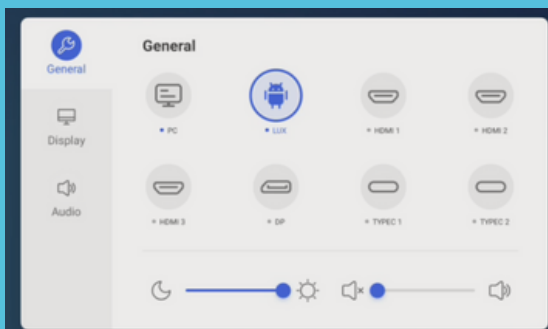
[Use our YouTube channel for further tips](#)



Bottom Arrow

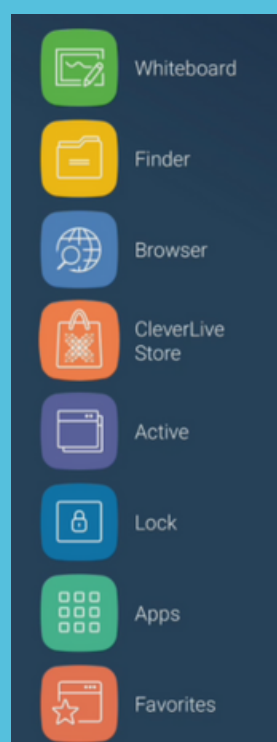
The bottom arrow on the Clevertouch home menu opens a quick-access menu where you can adjust sound settings, switch between inputs like HDMI or Type-C, and access additional tools and adjustments for audio and visual.

Simply tap the arrow to reveal more options and navigate through them for a smoother experience.

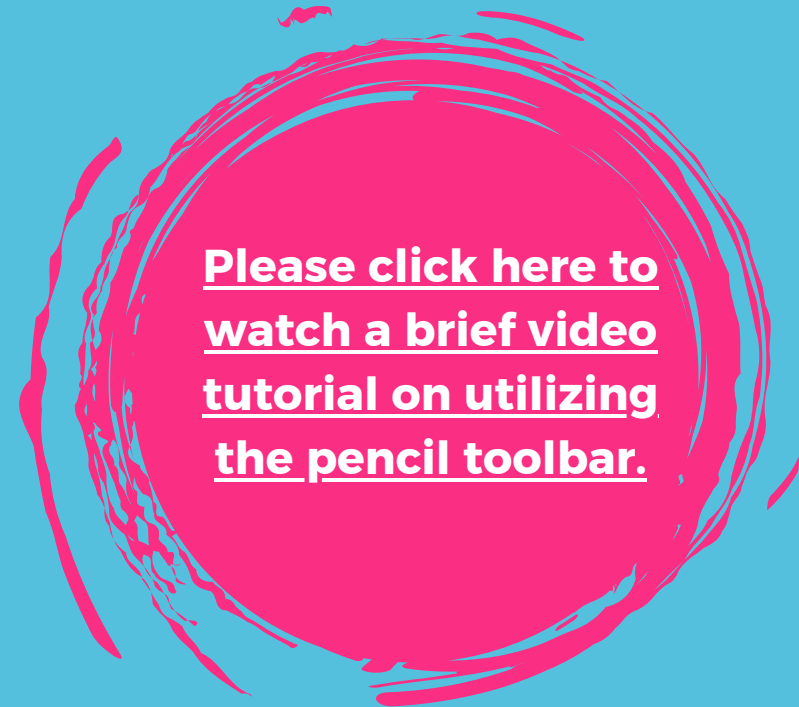
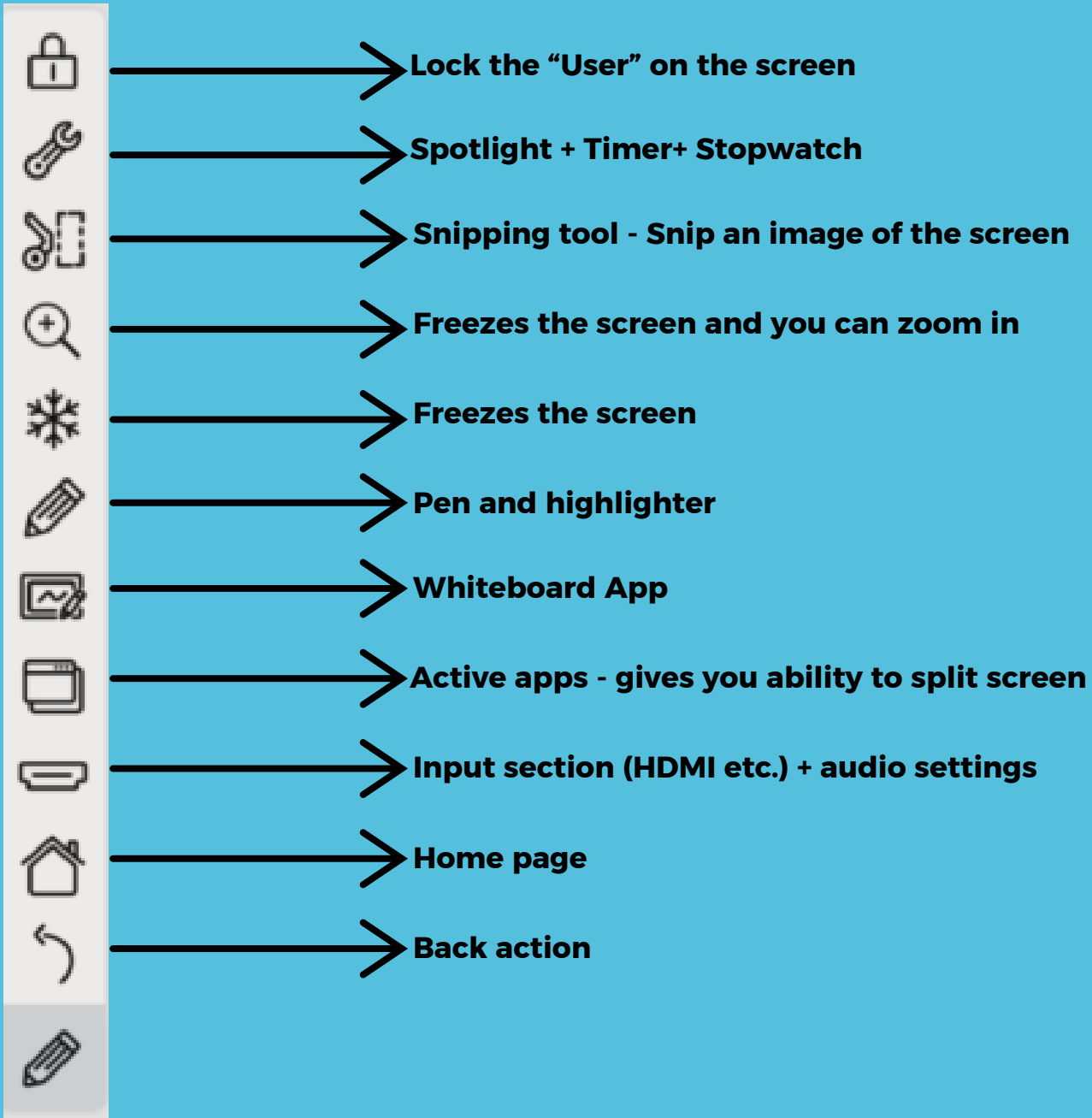


Side Arrows

The side arrows on the Clevertouch home page allow you to scroll through and access different apps. Simply tap the left or right arrow to browse through the available apps/actions and select the one you want to use.



What does the Pencil Toolbar do?



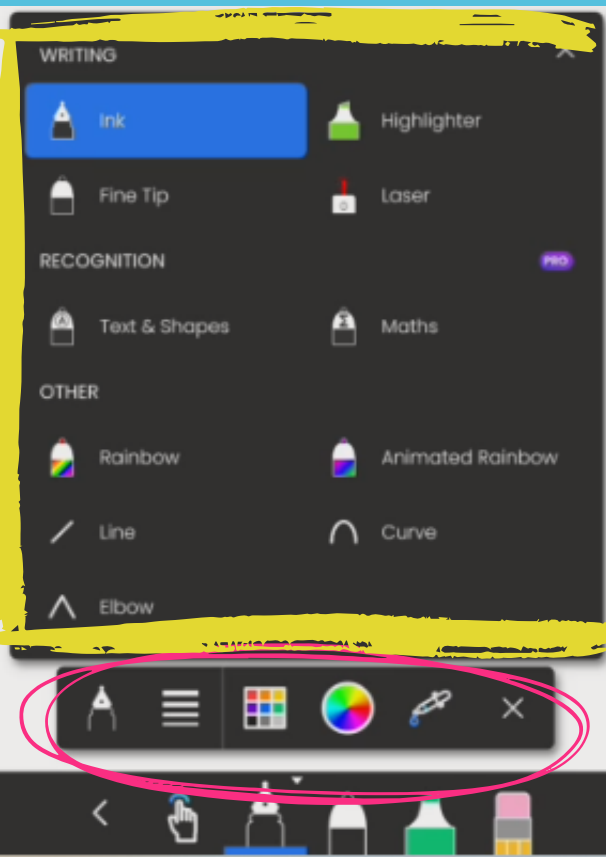
Finger pointer tool allows you to move objects around and resize them

The Pen icon grants you access to a variety of pen styles.

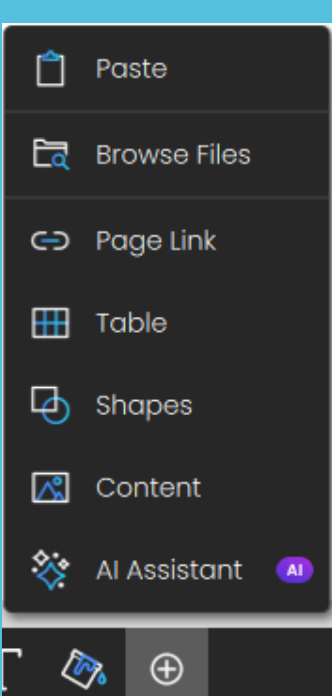
Selecting the "T" letter activates a textbox; when you tap the screen, it prompts the keyboard to appear for typing.

The paint pot feature enables you to modify the color of your background as well as various objects and text displayed on the screen.

The "+" icon will grant you access to various backgrounds, such as lined paper, as well as online resources, including images from Microsoft Bing, among others.



When I tap on one of my pens, a menu (circled in pink) will appear. Within this menu, I can adjust the pen size by selecting the horizontal lines icon. To change the pen color, I can use the multi-coloured box and circle icons. Additionally, if I tap the pen icon inside the pink box, it will open my pencil case menu (squared in yellow), where I can select a different type of pen.



The "Browse Files" option enables you to import various file types, such as PDFs and Word documents, into your whiteboard.

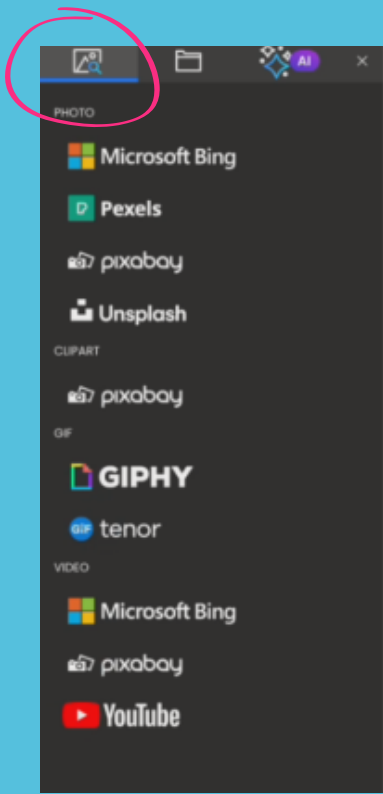
The Page Link feature enables you to incorporate a smaller window from an external page into your whiteboard.

Bring in a box table

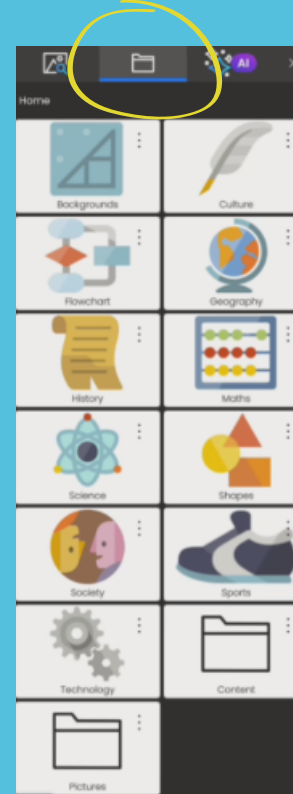
Bring in different shapes

Bring in online/local content

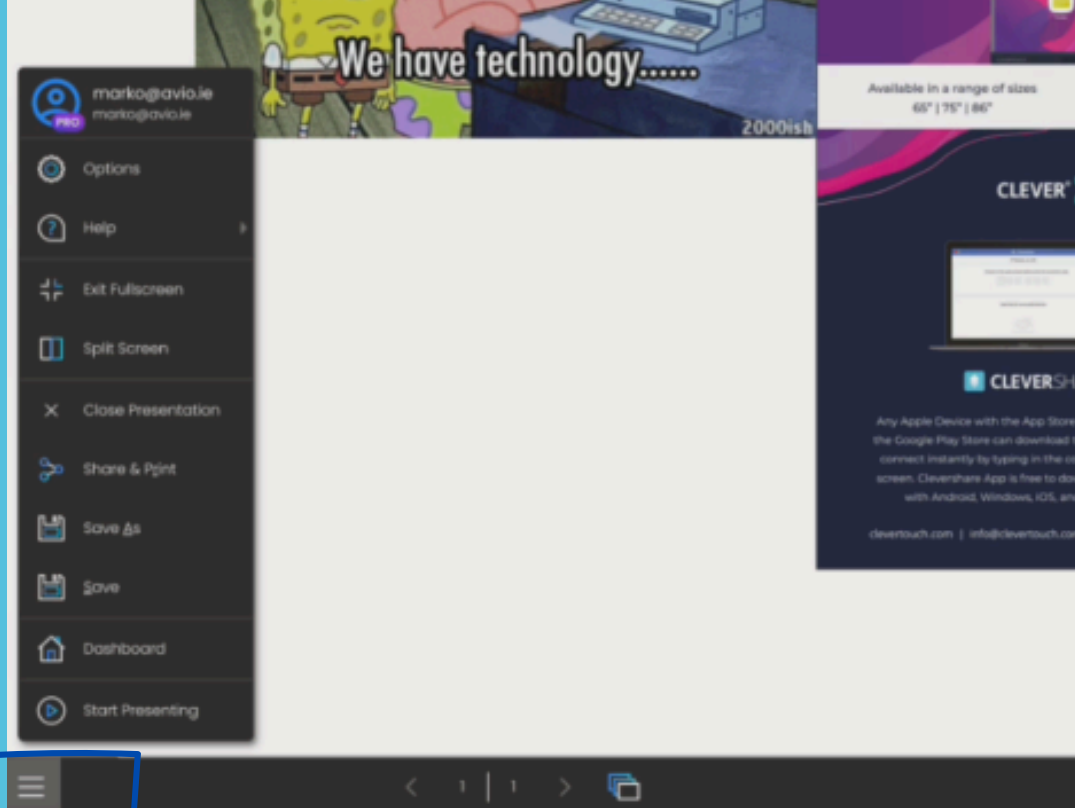
LYNX PRO AI assistant for lessons



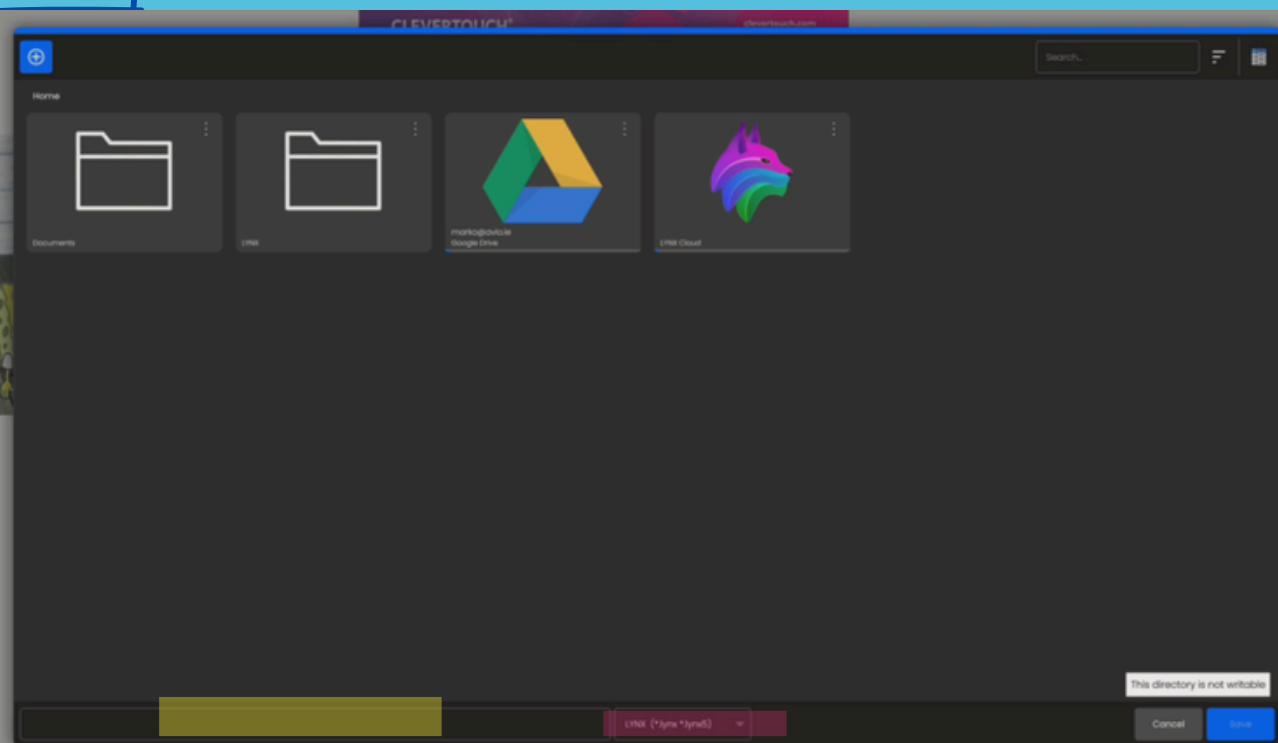
Within the 'Content' icon of the Lynx Whiteboard, you can access a variety of online content sources. By clicking on the photo icon with a magnifying glass (highlighted in pink), you can explore multiple search options. For example, you can search for YouTube videos, which will be displayed on the screen free from advertisements.



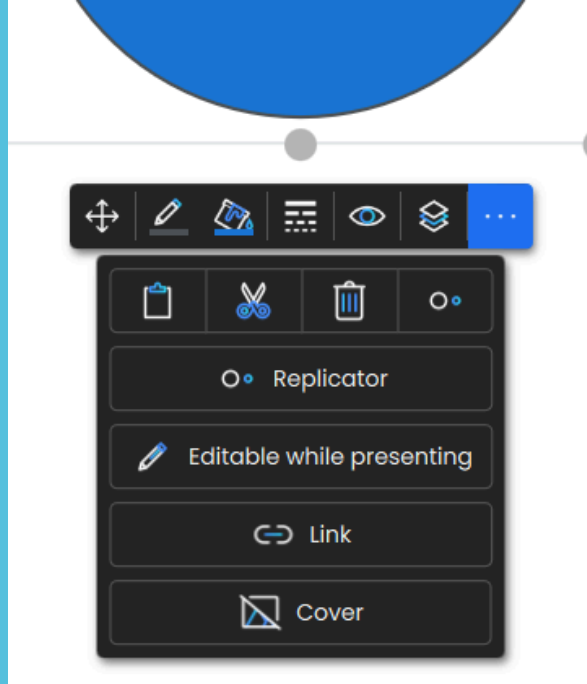
You can also access different backgrounds for the whiteboard and various tools for different subjects by tapping on the file icon circled in yellow. For instance, you can bring in a real-life measurement ruler and have students come up to the screen to measure certain lines.



To save a presentation you have created on the Lynx Whiteboard, tap the three-line menu at the bottom left side of the screen (highlighted in blue). From there, you will be presented with several options; tap on 'Save As' to save your presentation.



Once you tap on 'Save As,' a menu will appear with different storage options for your file. These options include Cloud Drive, Lynx Cloud, and internal display storage. It is recommended to save either to your own Cloud Drive (if you haven't connected your drive to your Lynx account, click here for instructions) or the Lynx Cloud to avoid filling up local storage. To name the file, tap on the space highlighted in yellow, and to change the file type (either Lynx file or PDF), tap on the space highlighted in pink. Keeping the Lynx file format is recommended if you want to retain interactive features.



To make an object interactive on the Lynx Whiteboard press on the **three dots icon**.

1. **Replicator**: Allows you to replicate the object/image each time you tap on it while presenting.
2. **Enable While Presenting**: Lets you move or resize the object during the presentation.
3. **Link**: Add a website or YouTube video link to the object. Tapping the object will display the link for students.
4. **Cover**: Use this to create a flashcard-like effect by covering the object with an image. Tapping the image reveals the hidden object.



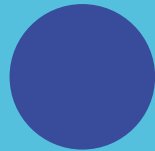
Red button= Disable/enable touch and Power button



Green button= Disable/enable Power Button



Yellow button= Disable/enable Touch



Blue button= Freeze the screen

[Click here to view a YouTube video demonstrating how these features function.](#)